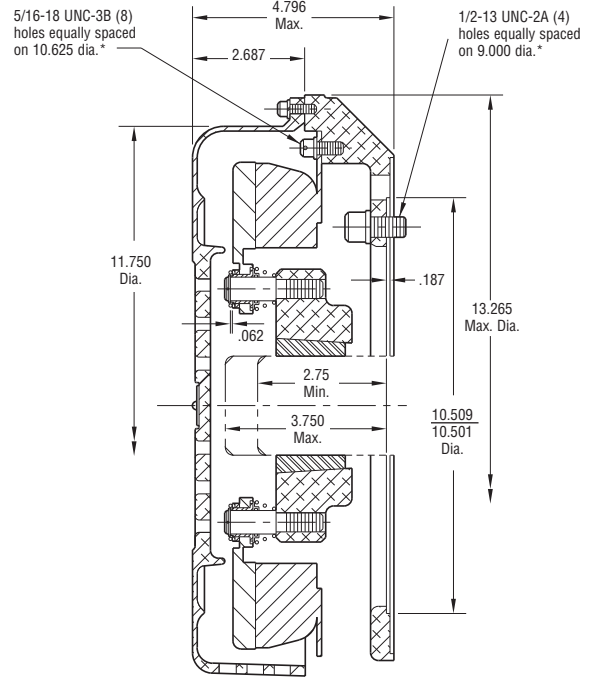
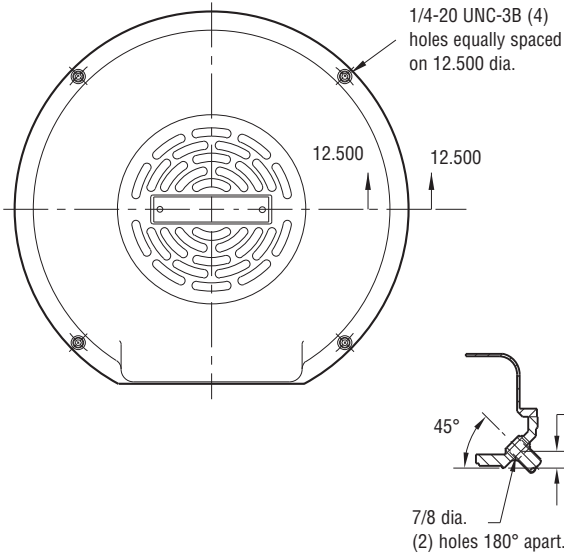


# Motor Brake

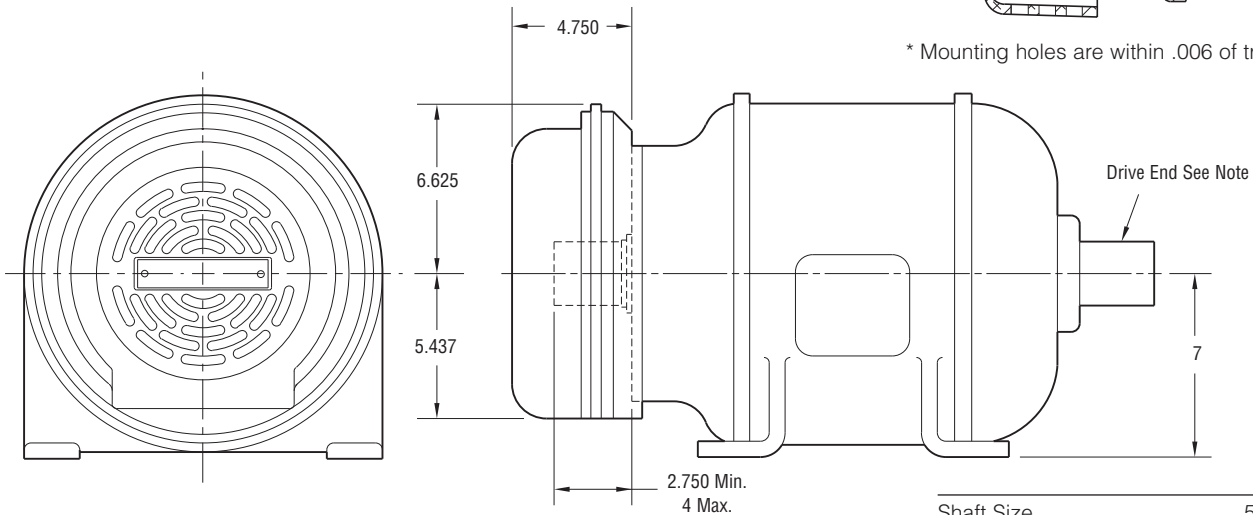
# Normal Duty

## MB-1000 Flange Mounted



## Installation

\* Mounting holes are within .006 of true position.



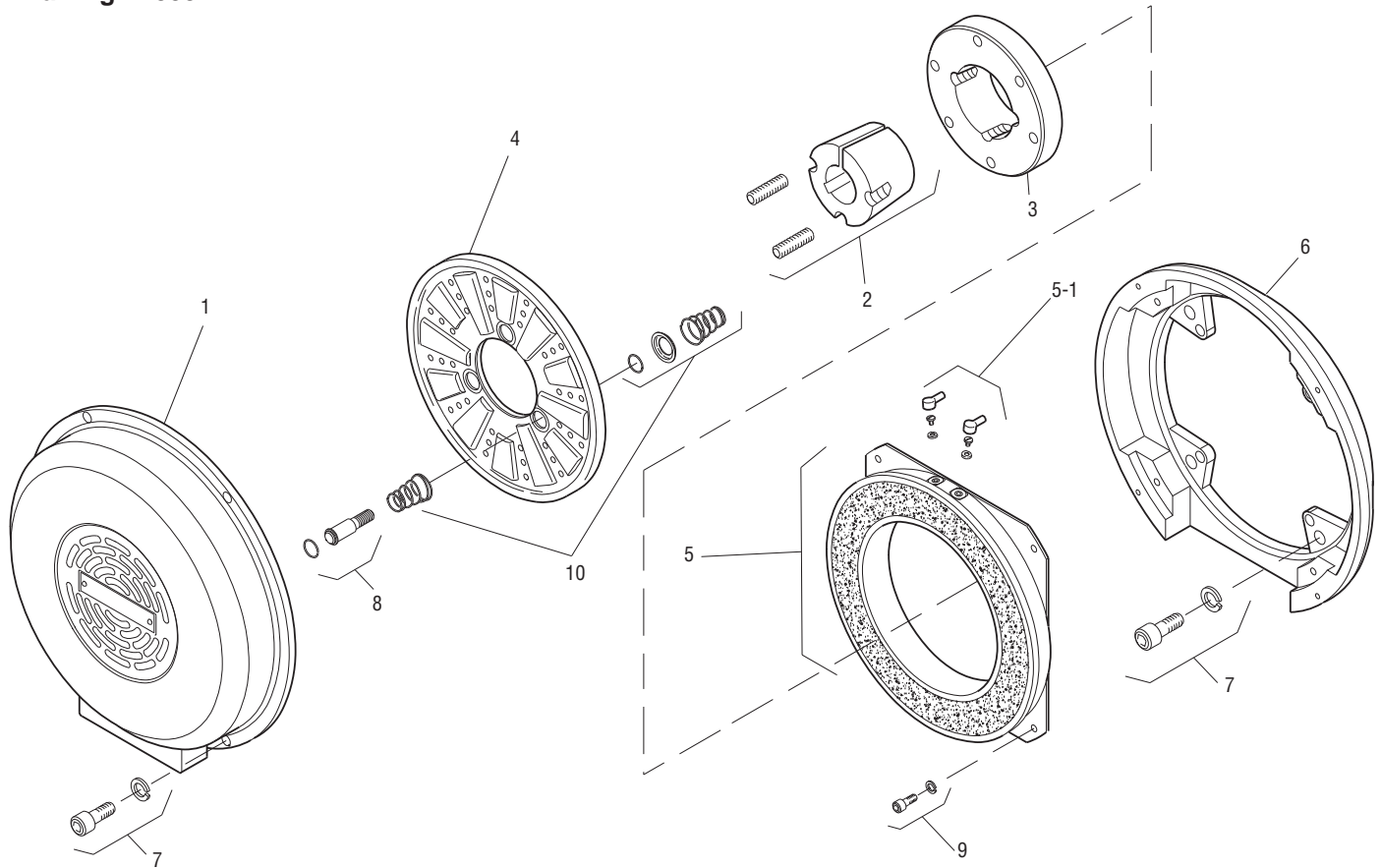
|                  |              |
|------------------|--------------|
| Shaft Size       | .500 – 2.500 |
| Static Torque    | 160 lb. ft.  |
| Maximum Speed    | 3,600 rpm    |
| Standard Voltage | D.C. 90      |

All dimensions are nominal unless otherwise noted.

Information on inertia and weights begins on page 239. Coil data is on pages 250 and 251.



Drawing I-25591



| Item | Description            | Part Number          | Qty. |
|------|------------------------|----------------------|------|
| 1    | Cover                  | 5352-288-001         | 1    |
| 2    | Bushing*               |                      | 1    |
|      | 1/2" to 2-1/2" Bore    | 180-0185 to 180-0217 |      |
| 3    | Armature Hub           | 540-0313             | 1    |
| 4    | Armature               | 5302-111-013         | 1    |
| 5    | Magnet - 90 Volt       | 5352-631-001         | 1    |
| 5-1  | Terminal Accessory     | 5311-101-001         | 1    |
| 6    | Adapter                | 5352-105-001         | 1    |
| 7    | Mounting Accessory     | 5351-101-003         | 1    |
| 8    | Drive Pin and Retainer | 5301-101-001         | 3    |
| 9    | Mounting Accessory     | 5321-101-002         | 2    |
| 10   | Spring Accessory       | 5301-101-014         | 3    |

**How to Order:**

1. MB-1000 Adapts to NEMA C Face, Double Shaft Motors, Frame Sizes 284 UC and 286 UC.
2. Specify Bore Size for Item 2. (Frame size determines bore).
3. See Controls Section.

**Example:**

MB-1000 Motor Brake per I-25591 - 90 Volt, 1-3/8" Bore

These units meet the standards of UL508 and are listed under guide card #NMTR2, file #59164. These units are CSA certified under file #LR11543.

\*See page 252 for specific part numbers.

Refer to Service Manual P-208.