

# Pneumatic Brakes

## Magnum Brakes

### Totally Enclosed with a Wide Range of Torque Capacities

Magnum series unwind tension brakes offer high performance in a compact, easy to install package. Air vents and an impeller-type disk are tuned to achieve highly efficient air flow. Heat dissipation is further enhanced by the use of an integral fan (optional). Four sizes are available with torque capacities from 17 lb.in. through 14,160 lb.in.

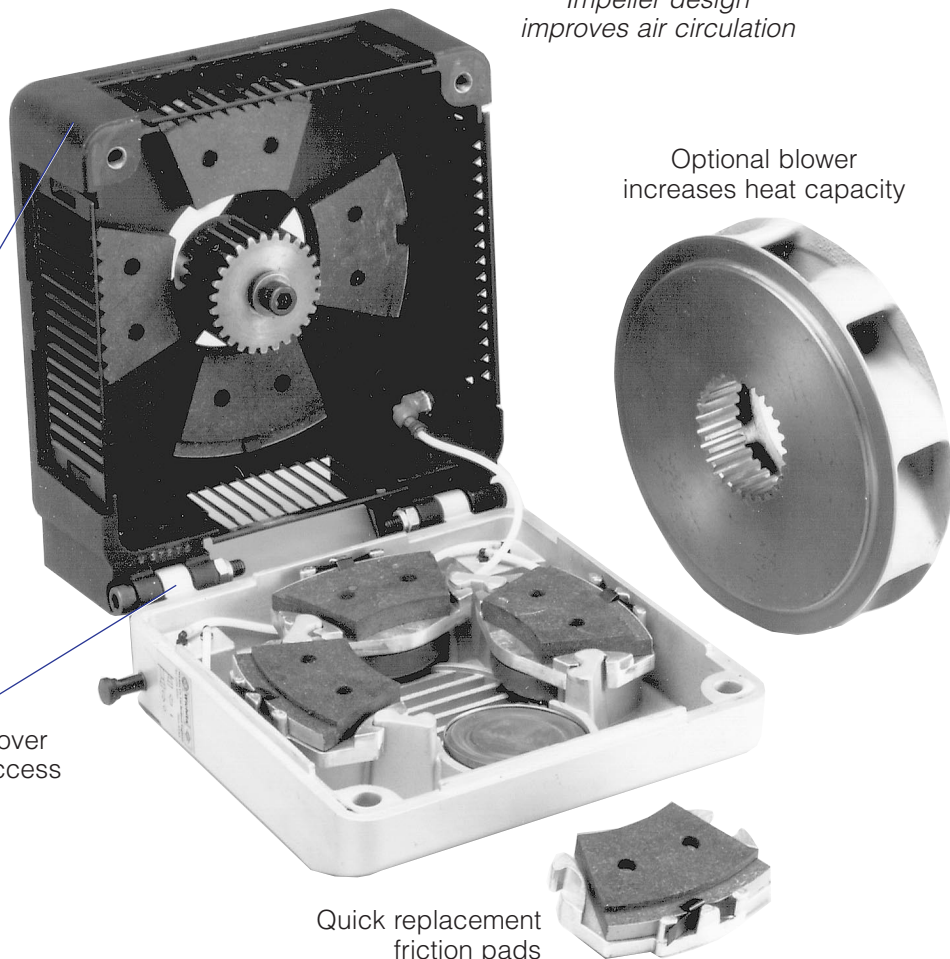
Totally enclosed.  
No guard required.

Hinged cover  
for easy access

*Impeller design  
improves air circulation*

Optional blower  
increases heat capacity

Quick replacement  
friction pads



# Pneumatic Brakes

## Magnum Brakes

### Specifications

Model No.	Dynamic Slipping Torque Cap. lb.in. <sup>1</sup>		Brake	Heat Transfer Capacity for Continuous Operation HP <sup>2</sup>				Maximum Speed (rpm)		Inertia of brake disc + hub (lb.ft. <sup>2</sup> )	Total Brake (lb.)	Weight Brake disc + Hub (lb.)						
	*Min 3 PSI	Max 80 PSI		HP Heat Transfer Cap. Forced Cooled at	50 rpm	100 rpm	200 rpm	500 rpm	Medium Speed brake disc (rpm)				High Speed brake disc (rpm)					
260/1LC	17	440	Mag.	1.3	1.5	1.9	2.9	2530	4427	.74	31	13.7						
260/1	26	660																
260/2LC	43	880																
260/2	60	1320																
260/3LC	60	1320		Mag. Plus	1.7	2.1	2.8						4.0					
260/3	85	1980																
260/4LC	85	1760																
260/4	113	2640																
340/1LC	35	687	Mag.	2.3	2.7	3.3	4.7	2040	3570	2.4	45	23						
340/1	43	1030																
340/2LC	70	1373		Mag. Thin	1.1	1.3	1.6						2.6					
340/2	86	2060																
340/3LC	95	2060		Mag. Thin	2.4	2.5	2.7						3.1					
340/3	129	3090																
340/4LC	129	2748		Mag. B	3.6	4.0	4.8						5.6					
340/4	172	4120																
340/5LC	163	3435		Mag. Plus	3.9	4.3	5						5.7					
340/5	215	5150																
340/6LC	198	4120		Mag. Plus	3.9	4.3	5						5.7					
340/6	258	6180																
400/2LC	86	1774		Mag.	3.5	4.0	5.2						8.8	1712	2996	5.7	71	41
400/2	113	2660																
400/3LC	129	2660	Mag. B					4.9	5.7	7.1	8.8							
400/3	172	3990																
400/4LC	172	3548	Mag. Plus		6.0	7.0	8.4	9.4										
400/4	225	5320																
400/5LC	215	4435	Mag. Plus		6.0	7.0	8.4	9.4										
400/5	286	6650																
400/6LC	252	5322	Mag. Plus		6.0	7.0	8.4	9.4										
400/6	238	7980																
400/7LC	285	6210	Mag. Plus		6.0	7.0	8.4	9.4										
400/7	400	9310																
400/8LC	338	7096	Mag.		4.7	6.0	8.7	14.7										
400/8	451	10640																
500/2LC	113	2360	Mag. B	10.0	11.4	12.6	14.7	1308	2289	17	127	60						
500/2	146	3540																
500/3LC	172	3540											Mag. Plus	10.7	12.0	13.4	16.8	
500/3	225	5310																
500/4LC	225	4720		Mag. Plus	10.7	12.0	13.4						16.8					
500/4	304	7080																
500/5LC	286	5900		Mag. Plus	10.7	12.0	13.4						16.8					
500/5	382	8850																
500/6LC	338	7080		Mag. Plus	10.7	12.0	13.4						16.8					
500/6	451	10620																
500/7LC	400	8260		Mag. Plus	10.7	12.0	13.4						16.8					
500/7	530	12390																
500/8LC	451	9440		Mag. Plus	10.7	12.0	13.4						16.8					
500/8	608	14160																

#### Notes

- The dynamic slipping torque range for a given brake model can be changed by switching the actuators in or out by means of the hand slide valves provided e.g. a 340/3 to a 340/2 or a 340/1.
- The heat transfer ratings in the above chart assume a forward rotation of the brake disc. For reverse rotation, the heat ratings of models Magnum 260 and Magnum 340 should be reduced by 15%. If in doubt, please contact your Wichita Clutch engineer.

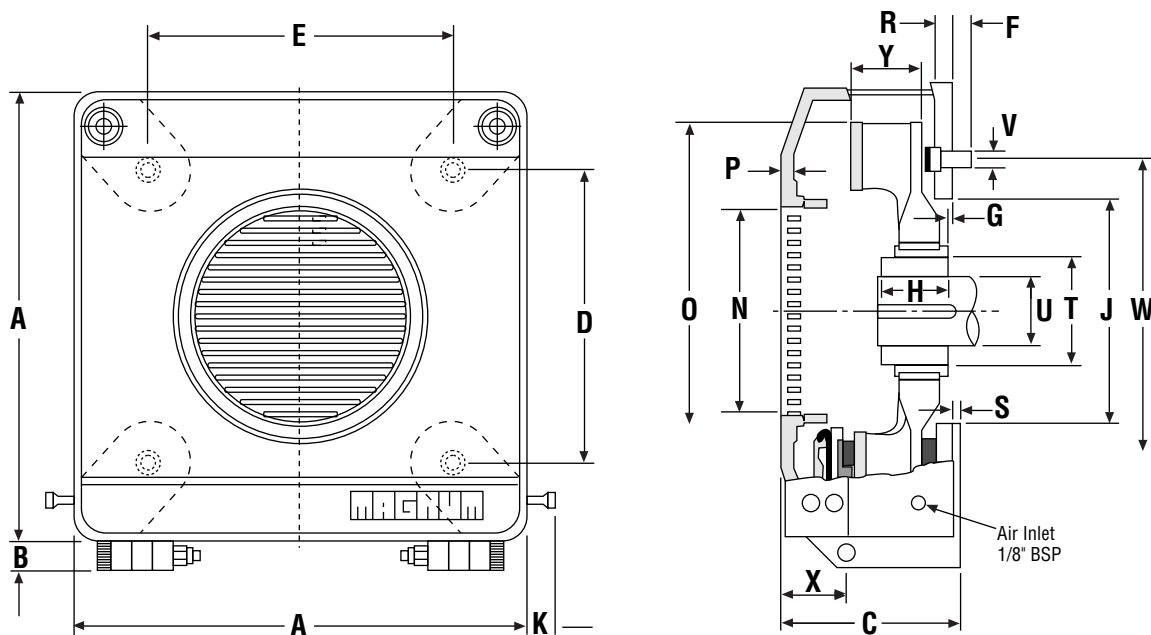
\* Lower minimum torques possible with appropriate control.

# Pneumatic Brakes

## Magnum Brakes

### Dimensions

#### Magnum



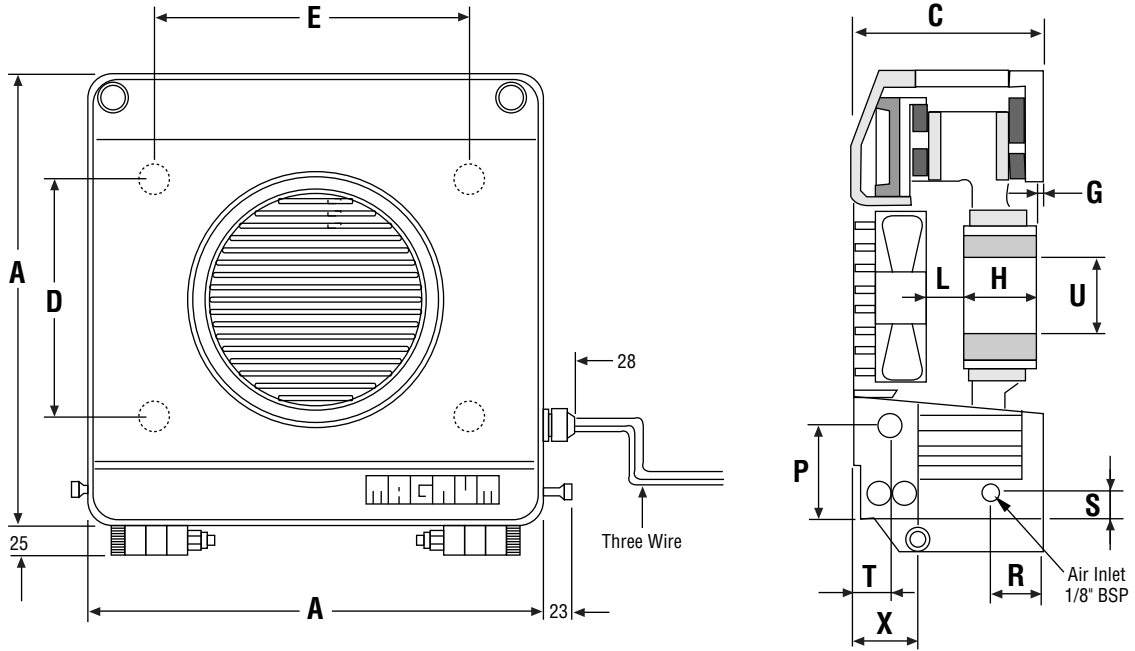
( ) denotes millimeters

Model No.	A	A1	B	B1	C	C1	D	E	F	G	H	J	K
<b>260</b>	10.4 (264)	10.6 (270)	1.0 (25)	0.8 (20)	5.7 (145)	7.7 (195)	7.0 (176.8)	7.0 (176.8)	0.8 (20)	0.2 (5)	2.2 (55)	3.9 (100)	0.9 (23)
<b>340</b>	13.6 (346)	13.8 (350)	1.0 (25)	0.8 (20)	5.7 (145)	8.0 (205)	5.5 (140.0)	9.5 (242.5)	0.9 (22)	0.2 (5)	2.2 (55)	6.9 (175)	0.9 (23)
<b>340 Thin</b>	13.6 (346)	13.8 (350)	1.0 (25)	0.8 (20)	5.12 (130)	8.0 (205)	5.5 (140.0)	9.5 (242.5)	0.9 (22)	0.2 (5)	2.2 (55)	6.9 (175)	0.9 (23)
<b>400</b>	16 (406)	16.1 (410)	1.0 (25)	0.8 (20)	5.7 (145)	7.7 (195)	10.4 (265.2)	10.4 (265.2)	1.1 (27)	0.2 (5)	2.4 (60)	7.9 (200)	0.9 (23)
<b>500</b>	19.9 (506)	2.0 (510)	1.1 (28)	0.8 (20)	5.7 (150)	8.0 (205)	13.3 (339.4)	13.3 (339.4)	1.2 (30)	0.2 (5)	2.4 (60)	12.6 (320)	0.9 (23)

Model No.	L	N	O	P	R	S	T	U	V	W	X	Y	Z	
							Min	Max		PCD				
<b>260</b>	2.0 (50)	3.7 (95)	9.0 (230)	.24 (6)	.59 (15)	.20 (5)	2.44 (62)	.59 (15)	1.77 (45)	4 off-M12 X 35	9.84 (250)	1.969 (50)	2.36 (60)	.47 (12)
<b>340</b>	2.0 (50)	5.5 (14)	11.0 (280)	.24 (6)	.51 (13)	.28 (7)	3.62 (92)	.98 (25)	2.24 (57)	4 off-M12 x 30	11.02 (280)	1.969 (50)	2.32 (59)	.47 (12)
<b>340 Thin</b>	2.0 (50)	5.5 (14)	11.0 (280)	.24 (6)	.51 (13)	.28 (7)	3.62 (92)	.98 (25)	2.24 (57)	4 off-M12 x 30	11.02 (280)	1.969 (50)	2.32 (59)	.47 (12)
<b>400</b>	1.0 (25)	7.9 (200)	13.4 (340)	.31 (8)	.51 (13)	.12 (3)	4.69 (119)	1.38 (35)	2.56 (65)	4 off-M16 x 40	14.76 (375)	2.047 (52)	2.36 (60)	.47 (12)
<b>500</b>	1.0 (25)	11.1 (283)	17.5 (445)	.44 (11)	.59 (15)	.08 (2)	5.6 (140)	1.38 (35)	4.08 (102)	4 off-M20 x 45	18.1 (480)	2.2 (55)	2.32 (59)	.47 (12)

Certified prints showing exact dimensions are sent with every order acknowledgement, and these should always be obtained before finalizing any design detail.

### Magnum B



### Magnum Plus

